



LWVG RTM Study:

Survey Results of Support for Recommendations by RTM Members

May 2018

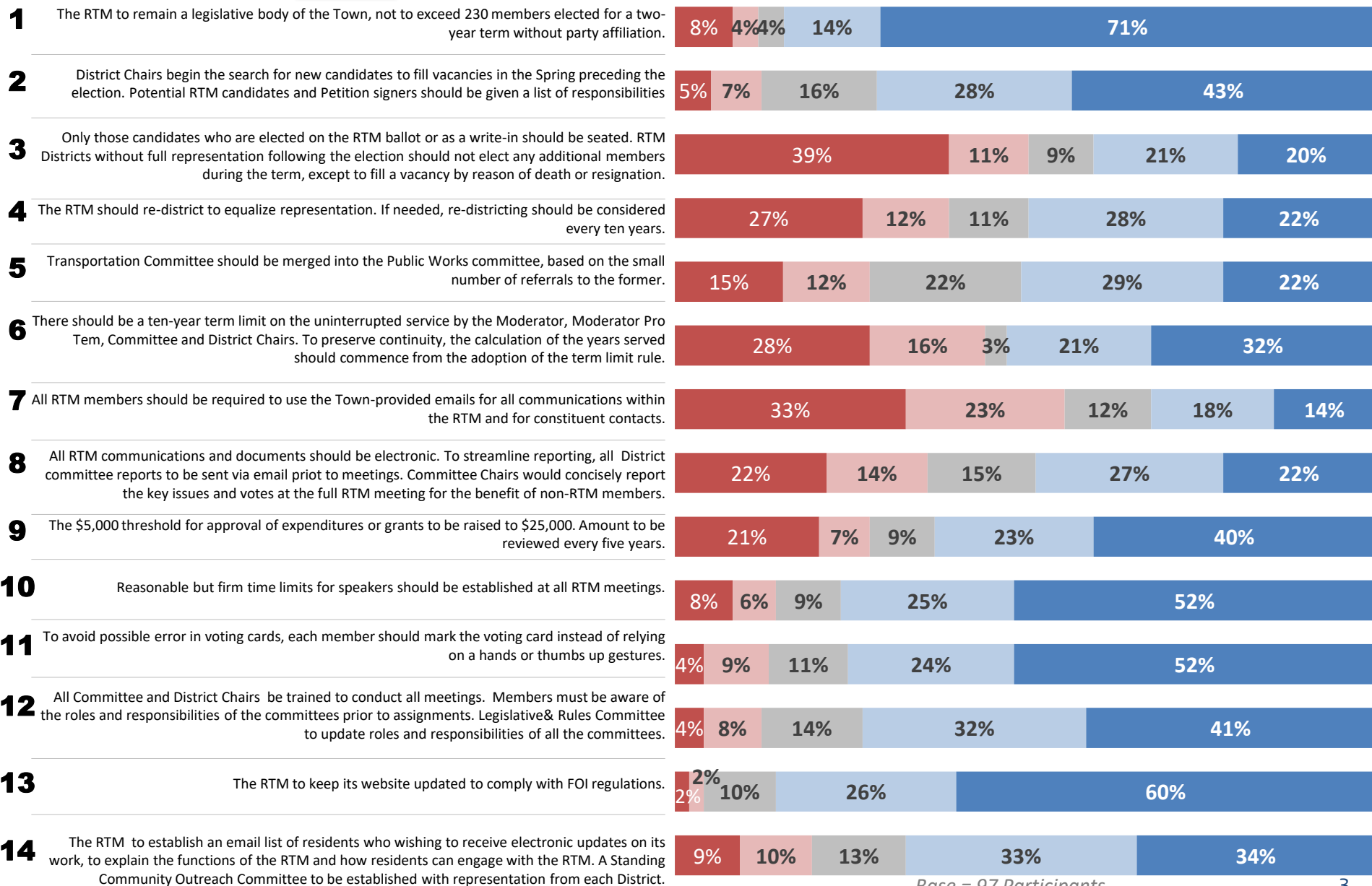
Methodology

- ❖ The questions of the survey were directly derived from the 14 recommendations made by the League of Women Voters RTM Study tabled in 2016.
- ❖ RTM members were also asked to identify the district they represent.
- ❖ The survey was programmed to be sent via email using *Survey Monkey*, an online, cloud-based survey platform.
- ❖ RTM member emails were collected in several ways:
 - RTM website
 - LWVG “ Online RTM Voters Guide”
 - RTM members
- ❖ The online survey ran from March 21 to April 9, 2018 with 97 respondents. The 2017 survey had 112 respondents.

Support for LWVG Study Recommendations by the RTM

2018

Strongly Oppose Somewhat Oppose Neither Oppose nor Support Somewhat Support Strongly Support



Base = 97 Participants

Significant Differences Between 2017 & 2018 Results

2017

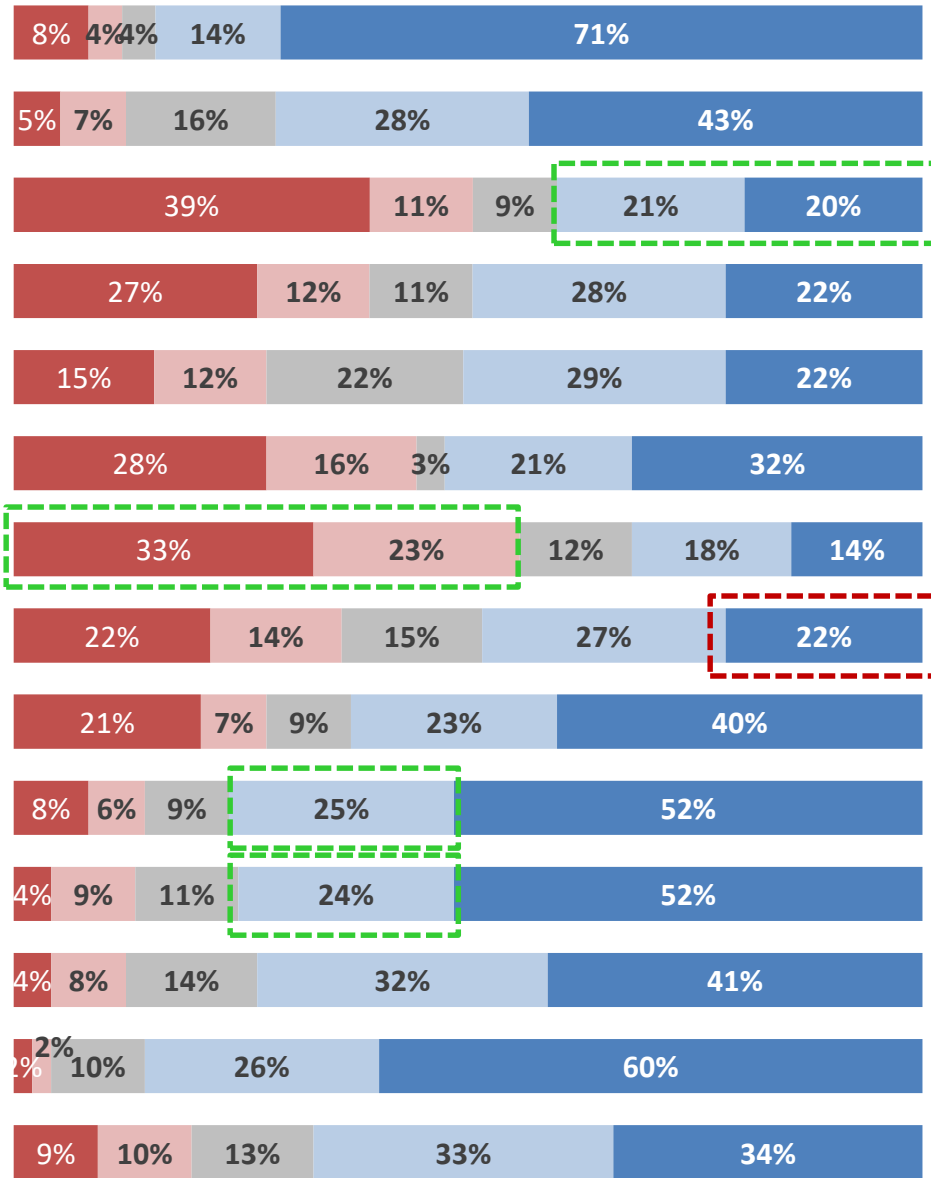
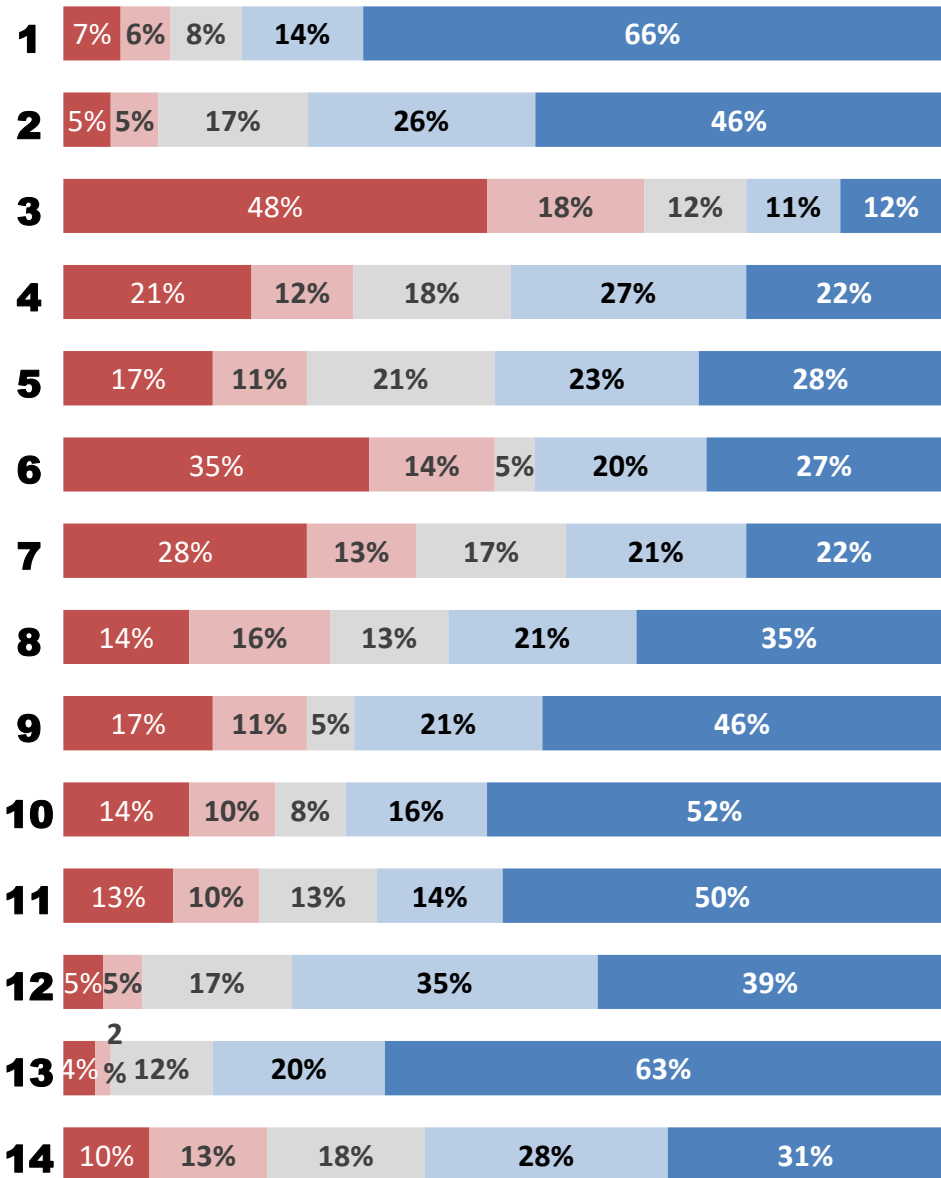
2018

Significant increase

Significant decrease

Strongly Oppose Somewhat Oppose Neither Oppose nor Support Somewhat Support Strongly Support

Strongly Oppose Somewhat Oppose Neither Oppose nor Support Somewhat Support Strongly Support



APPENDIX

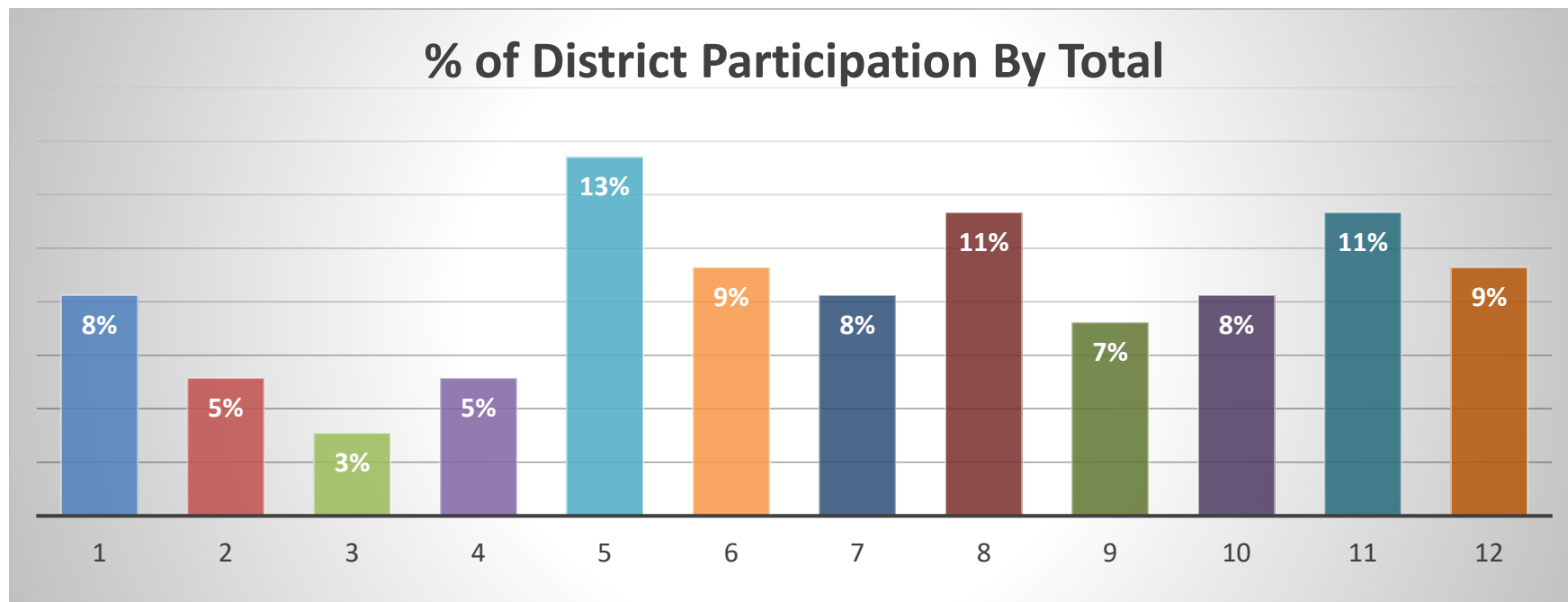
Executive Summary - 2018

- ❖ Given that only about 40% of RTM members completed the 2017 survey, with a few exceptions, there is a remarkable consistency in responses between the two survey periods.
- ❖ Support for recommendation No. 3 (*Only those candidates who are elected on the RTM ballot or as a write-in should be seated.*) increased significantly.
 - There was also an increase in the likelihood to somewhat support recommendations No. 10 (*time limit for speakers*) and No. 11 (*mark a voting card*).
- ❖ There was a significant decrease in support for recommendations No. 7 (*must use a Town-provided email address*) and No. 8 (*All RTM communications and documents should be electronic.*)

Access to full RTM study and Recommendations at <http://www.lwvg.org/RTMStudy.html>

District Participation Rate

A total of 97 RTM members completed the entire survey.



n=	8	5	3	5	13	9	8	11	7	8	11	9
----	---	---	---	---	----	---	---	----	---	---	----	---

Base = 97 Participants

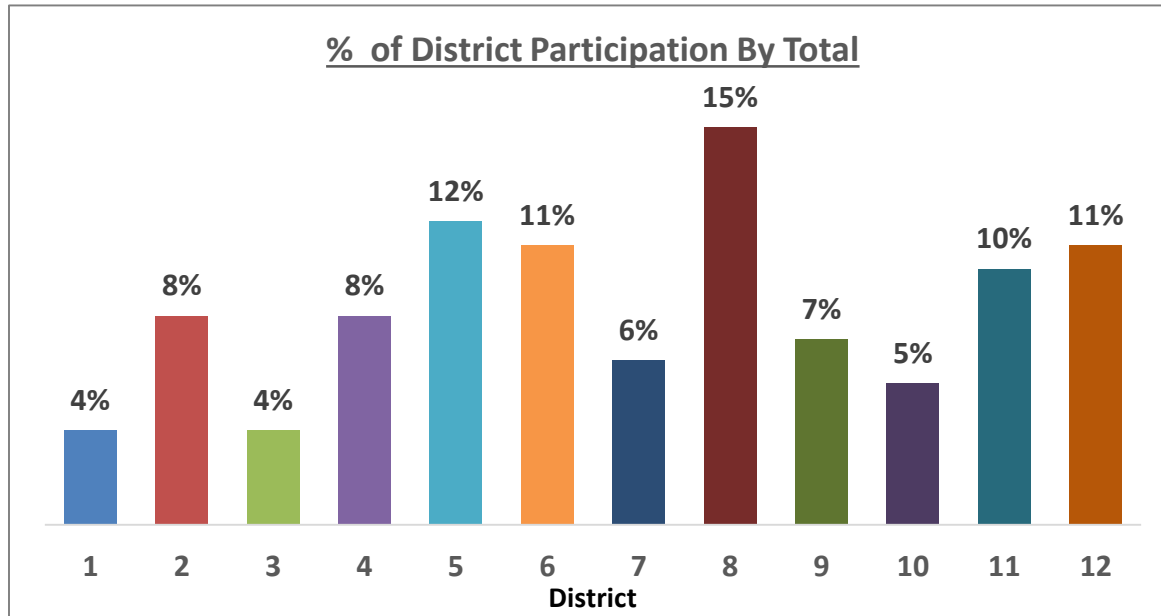
Number from each District (out of 97) who participated in the survey out of the Total completed surveys.

District Participation Rate

There was a small drop in the Total participation rate from 2017 to 2018, which represents a negligible change across individual districts.

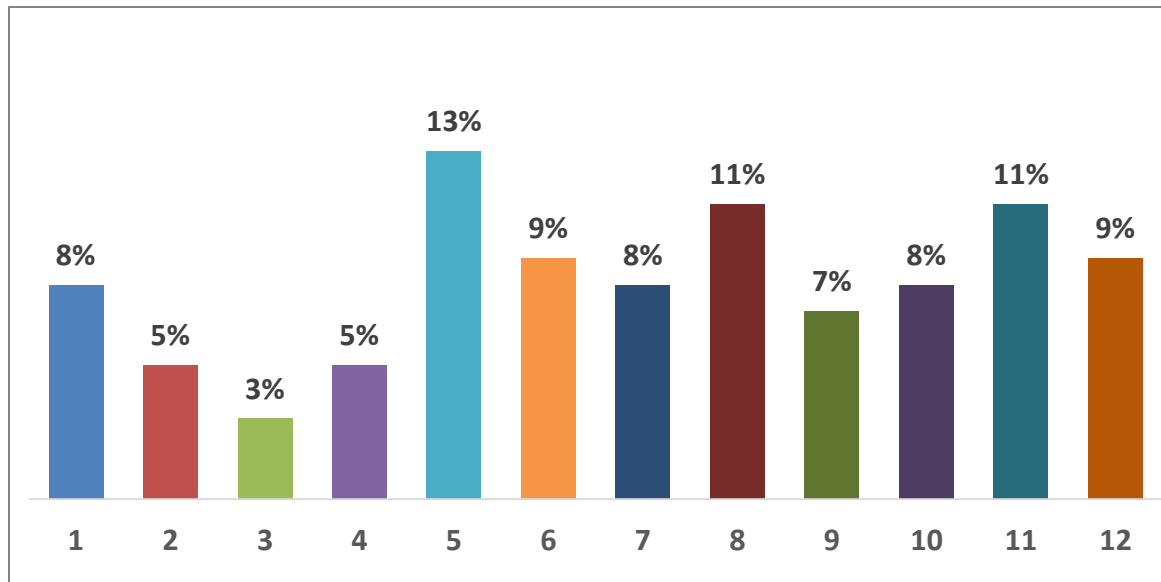
2017

Base = 112 Participants



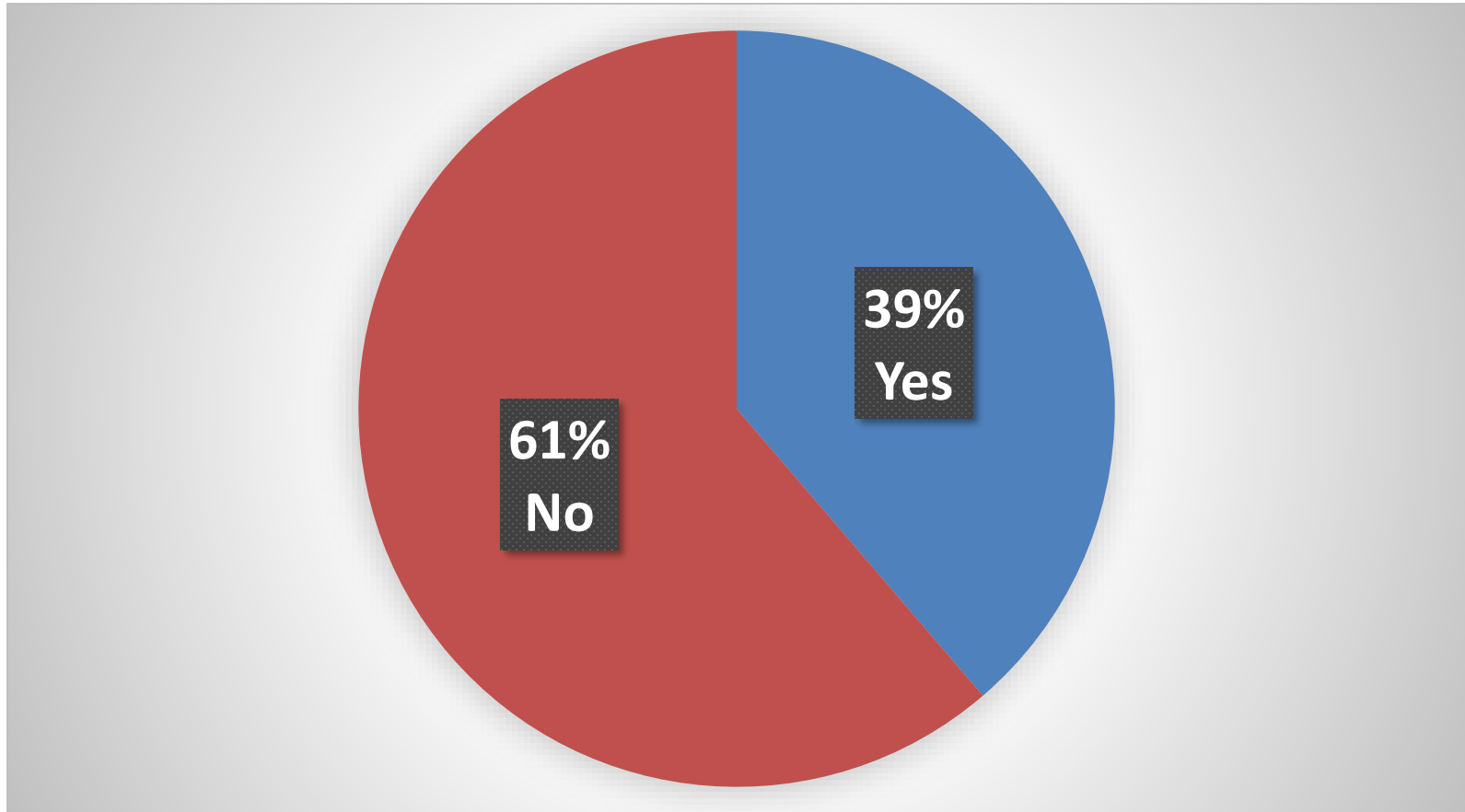
2018

Base = 97 Participants



Percentage Who Completed the Survey in 2017

39% of the current RTM members participated in both surveys



Q16. Did you previously complete this survey in 2017? Base = 93